

CERTIFICATE OF LOCATION OF GOVERNMENT CORNER

NORTHEAST Corner of Section 1, Township 108N, Range 39W

5th Principal Meridian, State of Minnesota, County of MURRAY

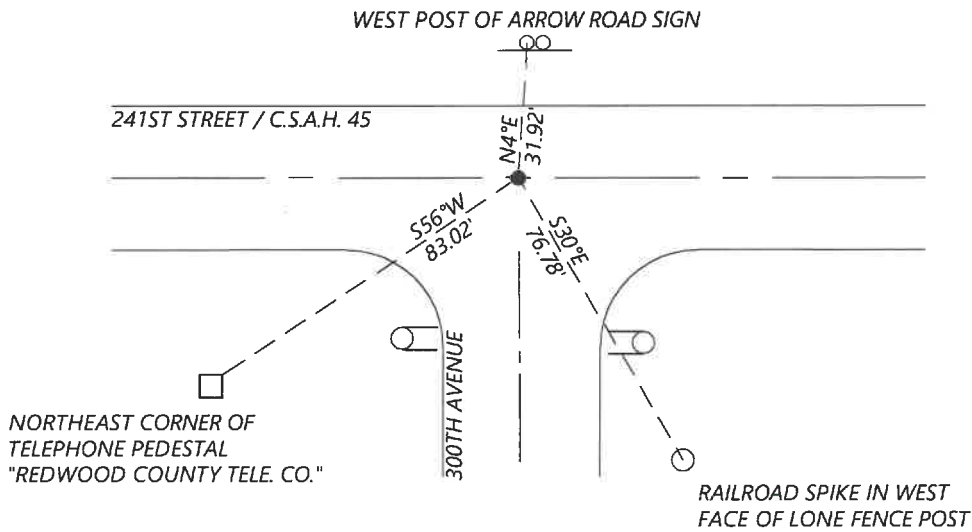
At the corner location shown on the sketch:

On 9/15/2020 found a RAILROAD SPIKE DOWN 1FT
DATE

left monument as found lowered monument removed monument (explain)

On _____ placed a _____
DATE

SKETCH OF REFERENCE TIES



N.T.S.

Statement of evidence for this corner location is on back of this page.

I hereby certify that this document was researched and prepared by me or under my direct supervision and that I am a licensed Land Surveyor under the laws of the State of Minnesota.

Signature [Handwritten Signature]

Date 6/17/2021 License No. 45874

Title:

- Land Surveyor Professional Engineer
- County Surveyor County Engineer

OFFICE OF THE COUNTY RECORDER

County of Murray

I hereby certify that this document was filed in the Co.

Recorder's office at _____ M. on the _____ day of _____ A.D. 20

County Recorder [Handwritten Signature: Karen Brown]

by JUN 22 2021, Deputy

DOCUMENT NO. _____

Statement of Evidence:

Northeast Corner of Section 1, Township 108 North, Range 39 West, 5th Principal Meridian, Murray County, Minnesota.

No GLO Notes.

- 1900 *Cottonwood County resurvey shows a distance of 2652ft to the West Quarter corner of Section 6 and 2616ft to the North Quarter corner.*
- 1901 *June, Survey record for Section 1 shows that the government corner was not found. A distance of 2648.2ft is shown to the East Quarter corner.*
- 2004 *December, A survey in Section 1 by Lyle Moseng shows a found 1in solid iron and se a $\frac{5}{8}$ " iron with seal #11943 over it.*
Coordinates: N: 226983.60 E: 579770.11
- 2020 *September, Westwood Professional Services searched and found a railroad spike 1ft below grade. Coordinates fit per the 2004 Moseng survey. I accepted the found monument and set reference ties.*

Analysis of the recovered data, field evidence and survey measurements, indicates that the monument found is the correct perpetuation of this corner. For additional information concerning this corner please contact Westwood Professional Services.